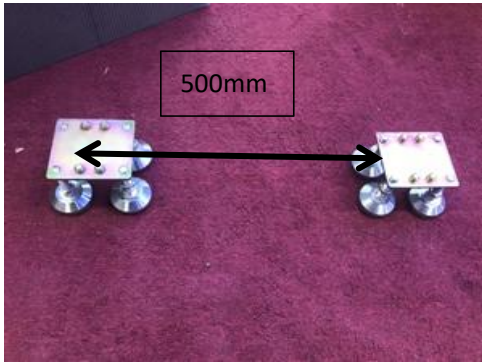


LED Intelligent Interactive Floor Screen Installation Manual--Floor support

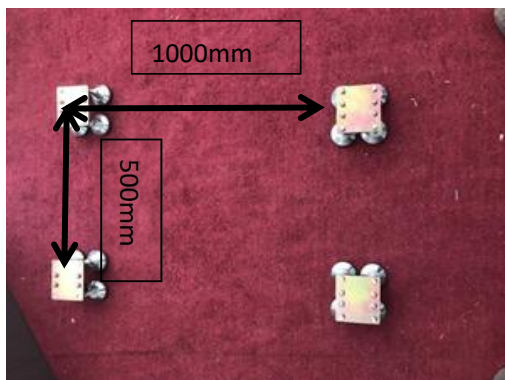


智慧显示·互动未来
SMART DISPLAY , INTERACTIVE FUTURE

1. Place the floor support according to the width of the picture, the width is about 500mm.



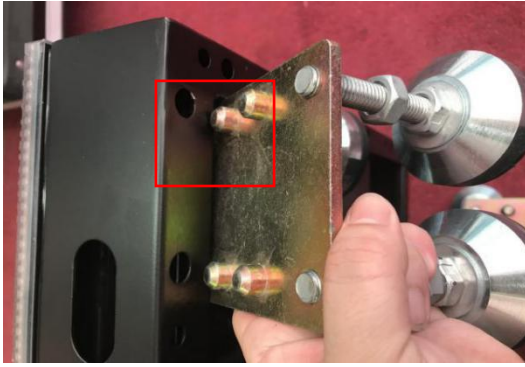
2. The length is about 1000mm, so that the cabinet can be placed on it, and the four floor supporters can be placed into a size of about 500mm * 1000mm.



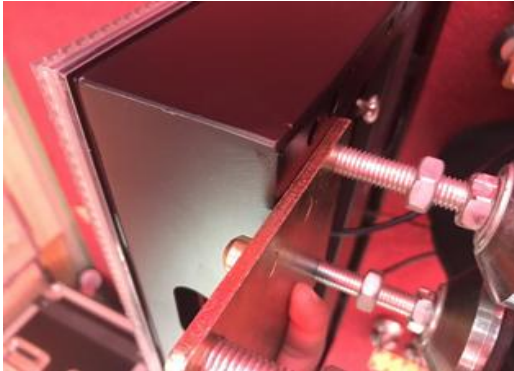
3. Place the cabinet next to the floor, pay attention to the direction of the arrow. All cabinets face one direction.



4. Place the positioning hole of the floor screen on the positioning column of the floor support.



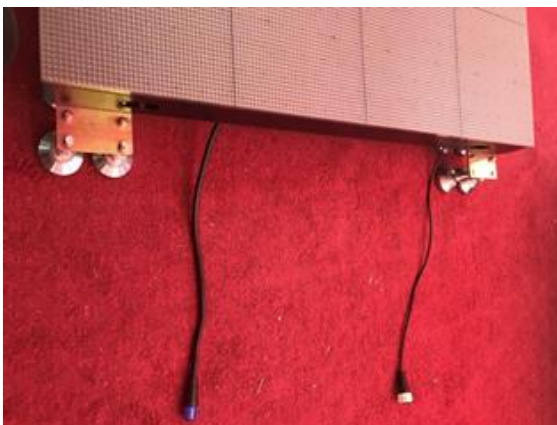
5. Adjust the screw height so that the screen is at the same level.



6. The screen is assembled with floor support.



7. Pull the power cord and network cable under the screen to the side.



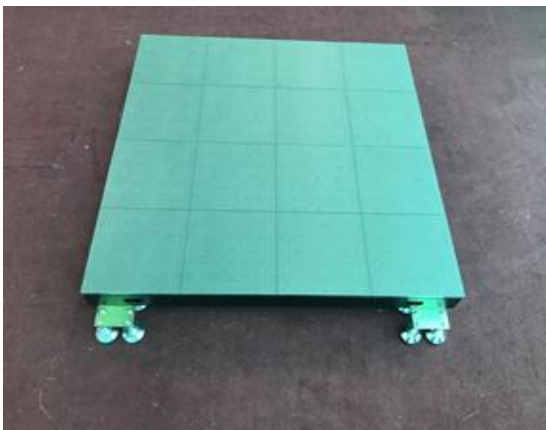
8. After placing the other two floor supports at a specified distance, move the next screen closer to the previous one.



9. Connect the power cable and the network cable in order.



10. Follow the above steps to install the next screen.



11. Finally complete all the installation.

